

COMPANY SPECIALIZED IN CIVIL AND STRUCTURAL ENGINEERING WITH MORE THAN 35 YEARS´ EXPERIENCE

DEVELOPING ALL OVER THE WORLD:

- INDUSTRIAL INSTALLATIONS
- BRIDGES AND VIADUCTS
- CIVIL ENGINEERING PROJECTS
- REMARKABLE BUILDINGS



INDUSTRIAL INSTALLATIONS



CBMI – NEW CEMENT PLANT 3.500 TPD – PHILIPPINES (VERY HIGH WIND AND SEISMIC CONDITIONS)

INDUSTRIAL INSTALLATIONS



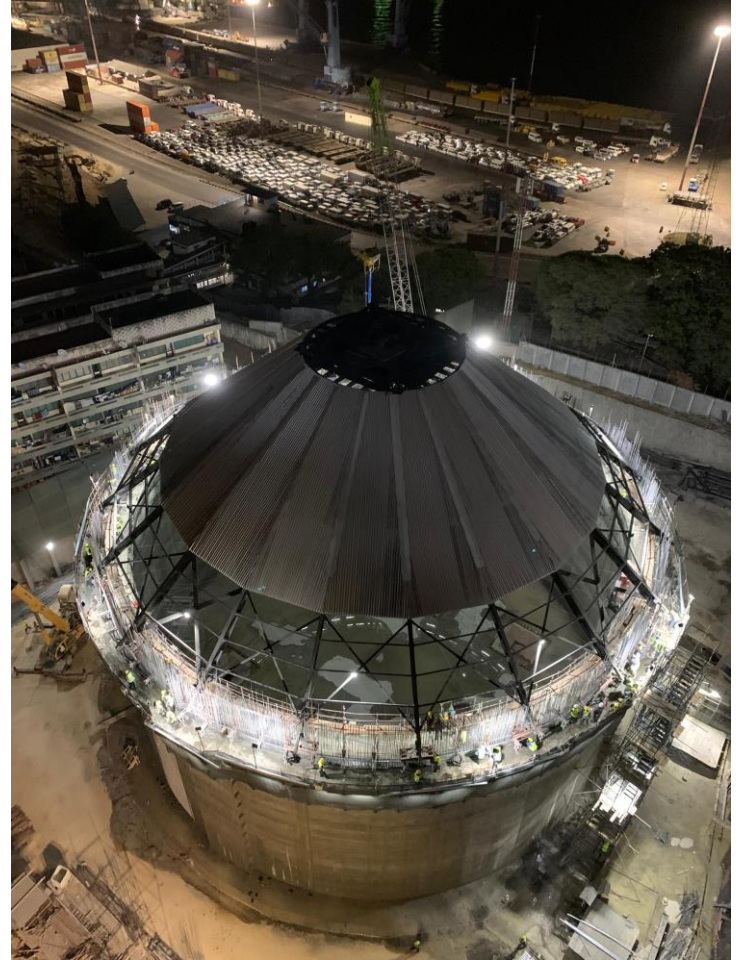
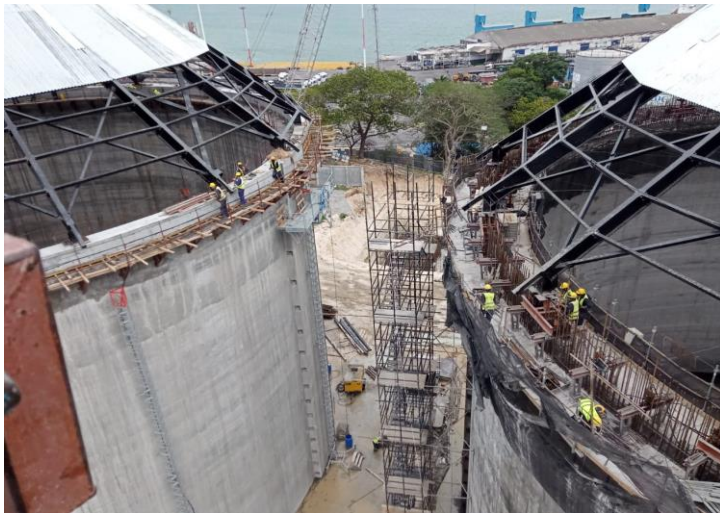
SGTM - NEW 3.600 TPD CEMENT PLANT – EL YADIDA (MOROCCO)

INDUSTRIAL INSTALLATIONS



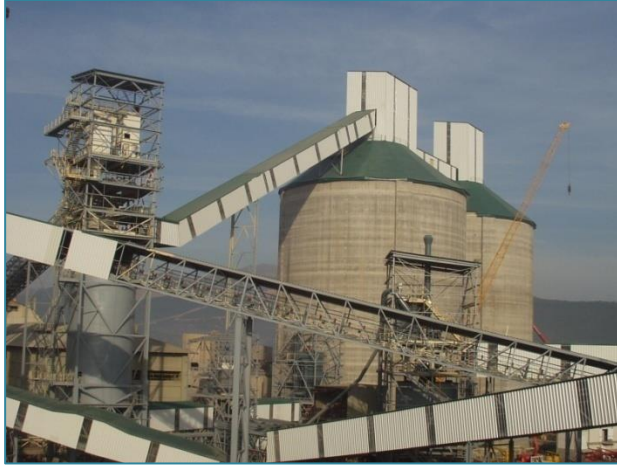
THYSSENKRUPP INDUSTRIAL SOLUTIONS - NEW CEMENT PRODUCTION LINE (2 X 10.000 TPD) - RIYADH (SAUDI ARABIA)

INDUSTRIAL INSTALLATIONS



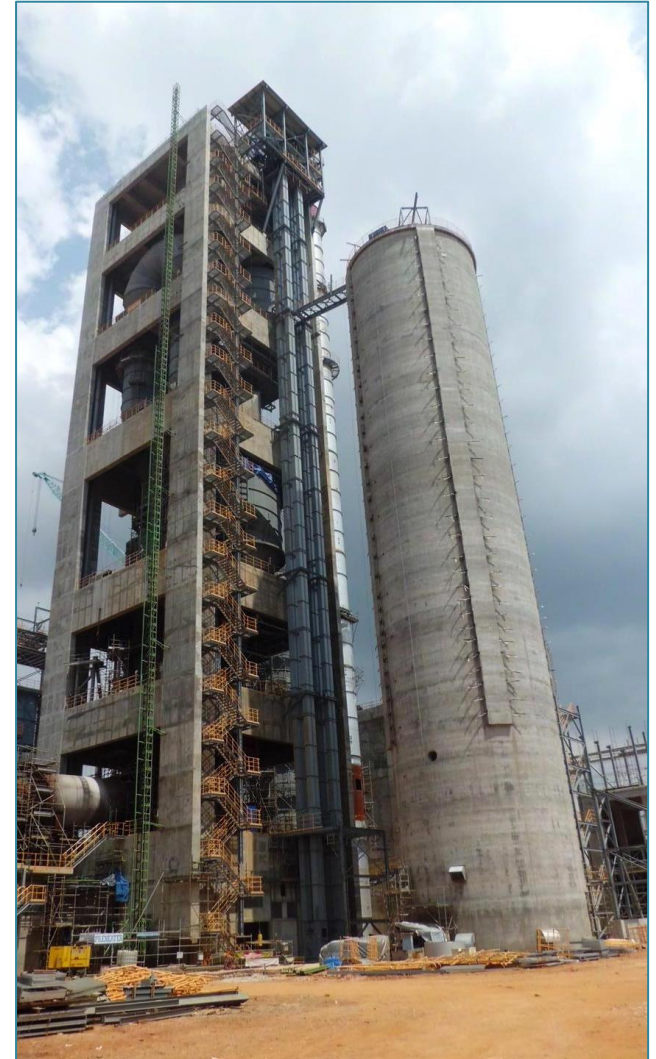
STOLZ - CLINKER SILOS (2 x 65.000 TON) AND STORAGE WAREHOUSES FOR FERTILIZERS AND COAL IN THE PORT - MOMBASA (KENYA)

INDUSTRIAL INSTALLATIONS



POLYSIUS AG - CEMENT PLANT 3.000 TPD – LA ROBLA – LEON – SPAIN

INDUSTRIAL INSTALLATIONS



**POLYSIUS AG - CEMENT PLANT 4.000 TPD
TUBAN (EAST JAVA) – INDONESIA**

INDUSTRIAL INSTALLATIONS



CLIENT: EMED TARTESSUS
REHABILITATION OF THE FINE GRANULOMETRY WAREHOUSE – MINAS DE RIOTINTO (HUELVA)

INDUSTRIAL INSTALLATIONS



CBMI - CEMENT PLANT 3.600 TPD – BENIN – AFRICA



INDUSTRIAL INSTALLATIONS

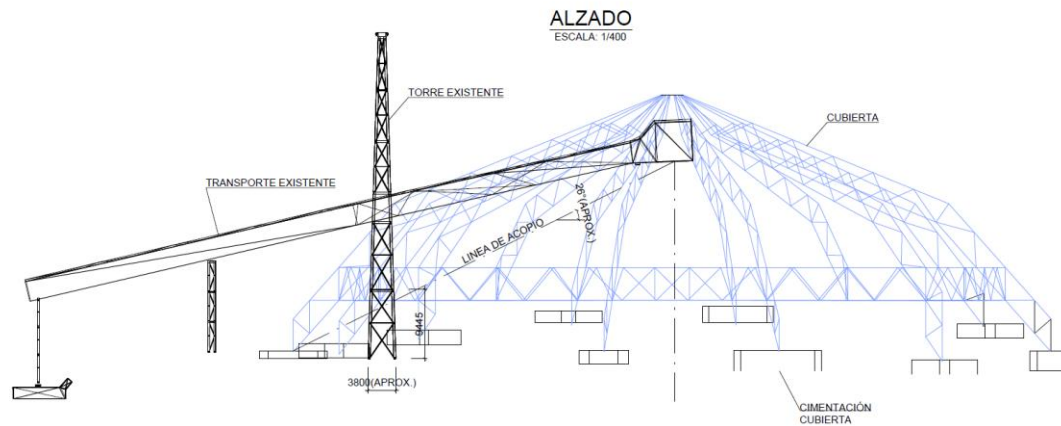
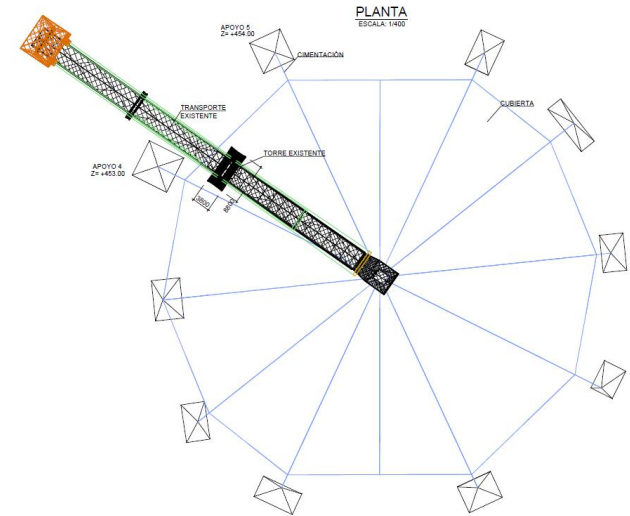
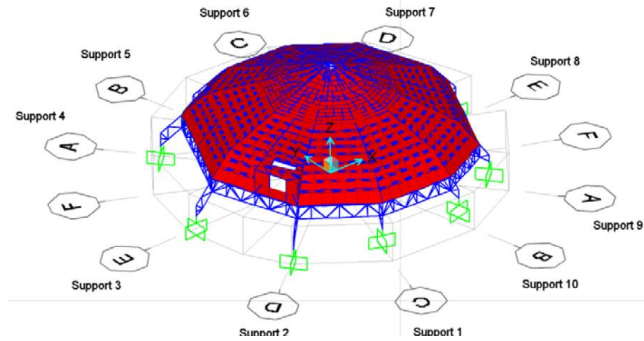


**CEMENGAL - CEMENT AND SLAG GRINDING PLANT
PORT KEMBLA - AUSTRALIA**

950.000 TONNES OF CEMENT AND 150.000 TONNES OF GGBFS PER YEAR



INDUSTRIAL INSTALLATIONS



CLIENT: OHL INDUSTRIAL MINING & CEMENT
INSPECTION, TECHNICAL REPORT AND MODIFIED PROJECT OF THE DOME – MINAS DE RIOTINTO (HUELVA)

INDUSTRIAL INSTALLATIONS



INTERMALTA - NEW MALT PLANT- SEVILLA - SPAIN

INDUSTRIAL INSTALLATIONS



SIDERÚRGICA BALBOA - IRON AND STEEL PLANT EXTENSION (140.000 M2)
JEREZ DE LOS CABALLEROS – BADAJOZ - SPAIN

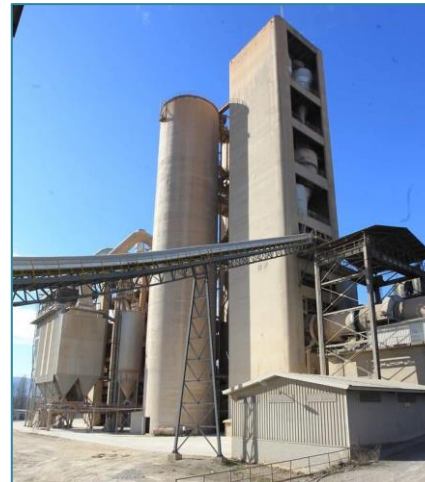
INDUSTRIAL INSTALLATIONS



**POLYSIUS AG - CLINKER PLANT 3.000 TPD
PALMARITOS (PUEBLA – MÉXICO)**

INDUSTRIAL INSTALLATIONS

CEMENTOS COSMOS - COMPLETE CEMENT LINE 2.000 TPD TORAL DE LOS VADOS – LEÓN - SPAIN



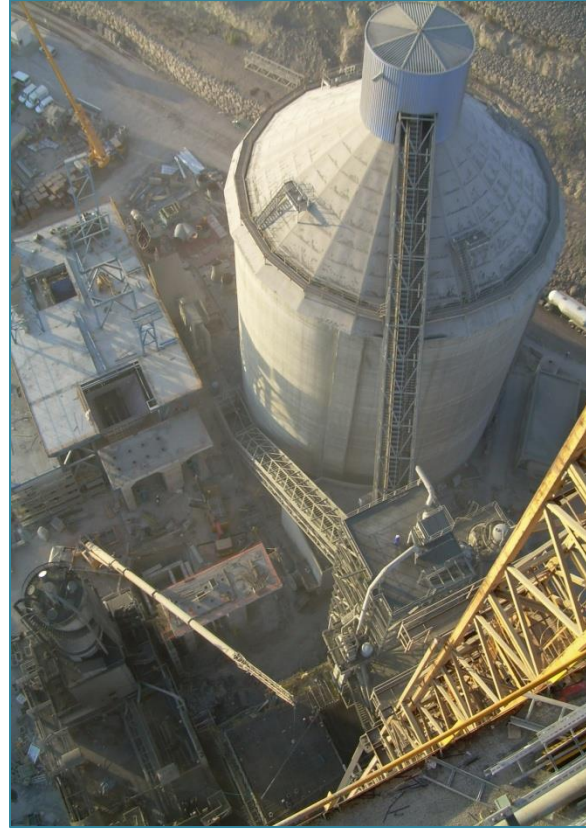
INDUSTRIAL INSTALLATIONS



STOLZ - BIODIESEL PLANT
OLMEDO – VALLADOLID – SPAIN

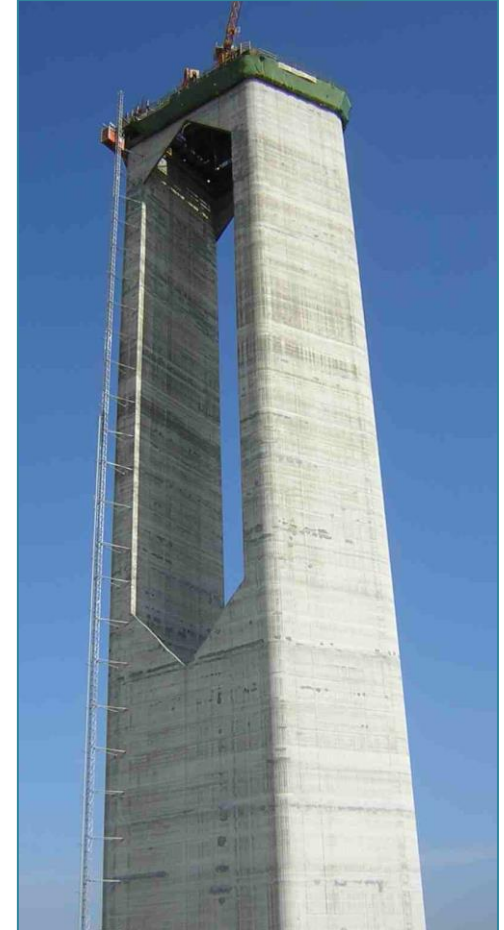
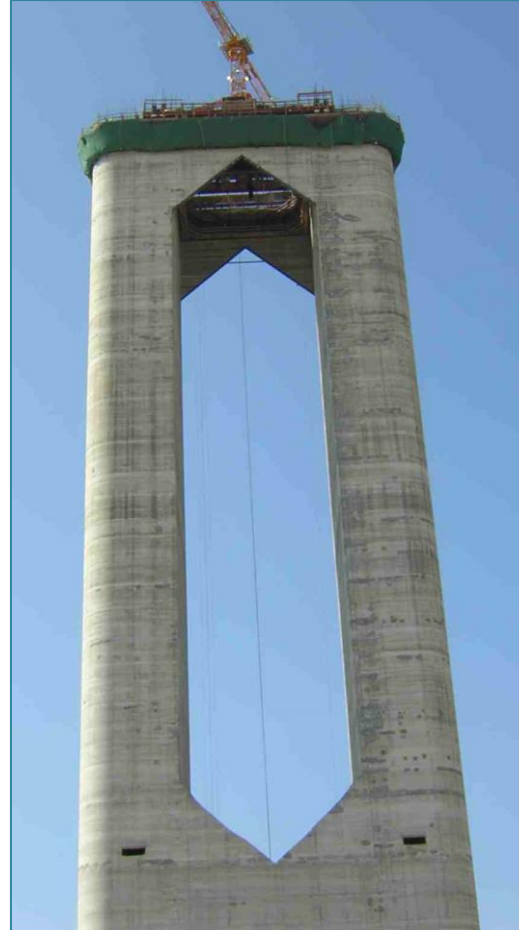


INDUSTRIAL INSTALLATIONS



**SOCIEDAD FINANCIERA Y MINERA - NEW CEMENT KILN LINE 3.300 TPD
MALAGA - SPAIN**

INDUSTRIAL INSTALLATIONS



EDYTESA - SOLAR THERMAL POWER PLANT - SEVILLA – SPAIN

PRE-STRESSED CONCRETE TOWER – HEIGHT = 180 m

INDUSTRIAL INSTALLATIONS



CEMENTOS MOLINS - NEW CEMENT KILN LINE 4.100 TPD

SANT VICENÇ DEL HORTS Y PALLEJÀ – BARCELONA - SPAIN

INDUSTRIAL INSTALLATIONS



HARINERA VILAFRANQUINA - NEW FLOUR FACTORY
SANTA MARGARIDA I ELS MONJOS – BARCELONA - SPAIN



AZUCARERA EBRO - SUGAR PACKING CENTRALIZATION
BENAVENTE – ZAMORA - SPAIN

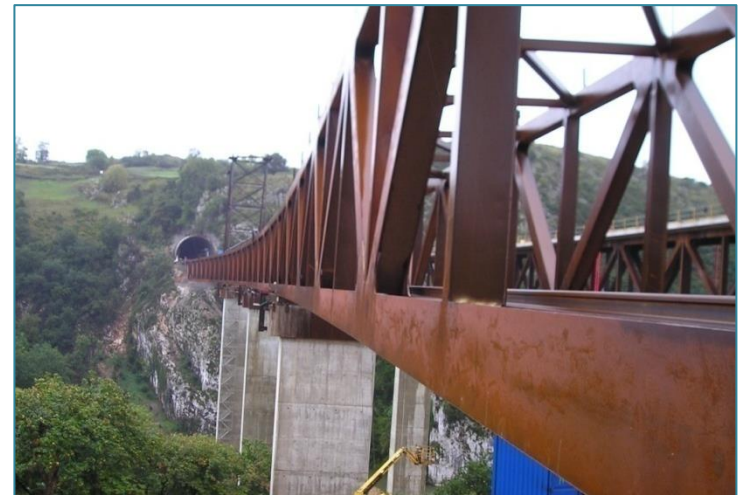
INDUSTRIAL INSTALLATIONS



CTG ITALCEMENTI - NEW CEMENT PLANT 5.000 TPD
AÏT BAHA - MOROCCO



BRIDGES AND VIADUCTS

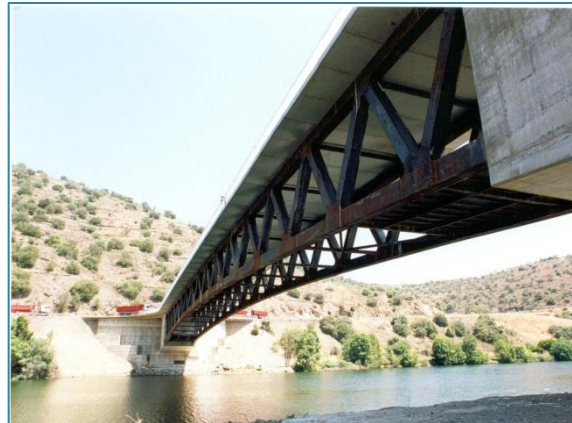
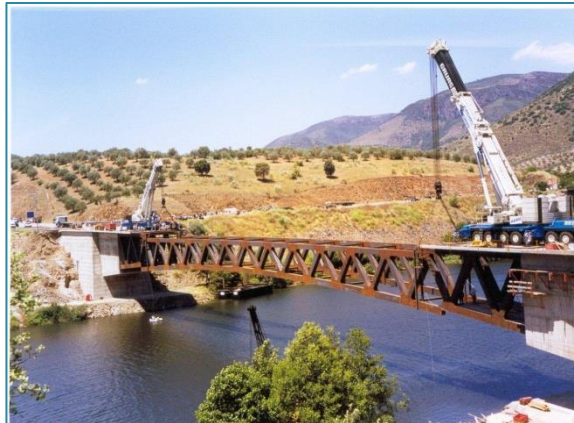
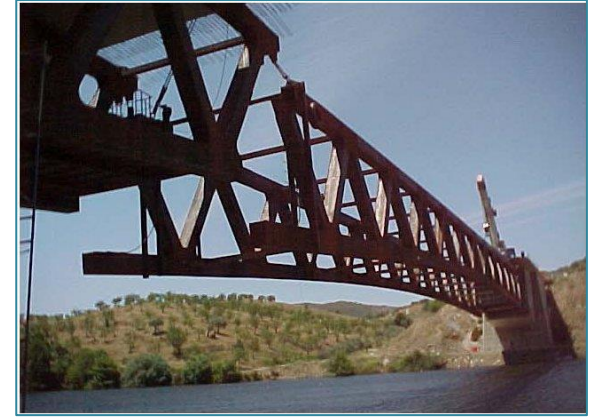
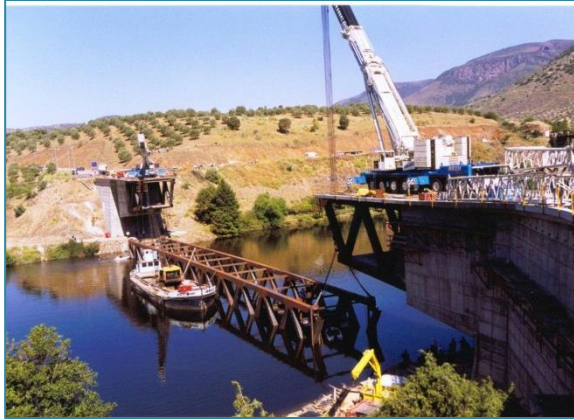


SERCAL - VIADUCT OVER NALON RIVER – ASTURIAS – SPAIN

CONTINUOUS TRUSS BRIDGE

MAIN SPAN= 165 m

BRIDGES AND VIADUCTS

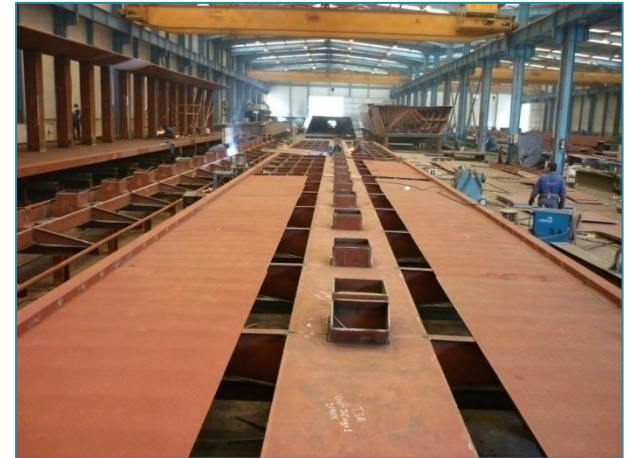


TAPUSA- ROAD BRIDGE OVER AGUEDA RIVER - SALAMANCA – SPAIN

STEEL TRUSS BRIDGE

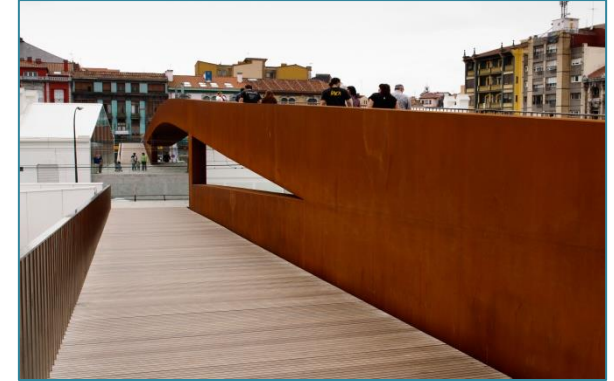
MAIN SPAN = 145 m

BRIDGES AND VIADUCTS



TAPUSA - FOOTBRIDGES OVER M-30 - MADRID – SPAIN
STEEL TRUSS GIRDER OVER PRECAST CONCRETE PIERS
SPAN LENGTH = 90 m

BRIDGES AND VIADUCTS



DRAGADOS - FOOTBRIDGE OVER AVILES FIRTH – SPAIN
ACCESS TO INTERNATIONAL CULTURAL CENTRE
“OSCAR NIEMEYER”

STEEL FRAME BRIDGE

MAIN SPAN= 110 m

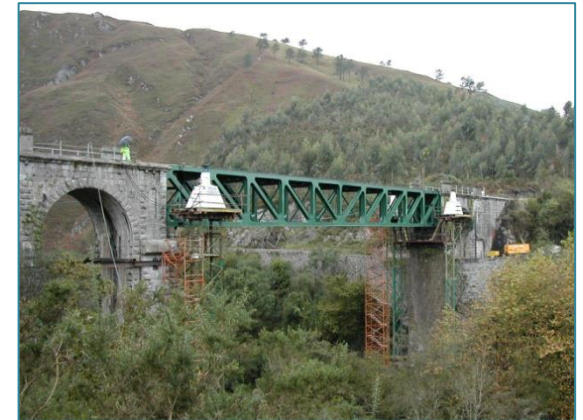
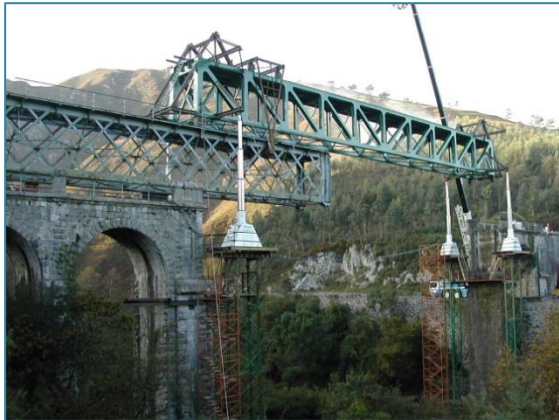
BRIDGES AND VIADUCTS



CALATRAVA VALLS
LA SERRERÍA BRIDGE - VALENCIA - SPAIN
CABLE-STAYED BRIDGE MAIN SPAN = 160 m



BRIDGES AND VIADUCTS



**TAPUSA - RAILWAY BRIDGE REPLACEMENT OVER PURON RIVER
ASTURIAS - SPAIN**

BRIDGES AND VIADUCTS



COPROSA - CONNECTING VIADUCTS ON CEARES JUNCTION - ASTURIAS – SPAIN

STEEL BOX GIRDER BRIDGES

SPANS = 60/80/100 m

BRIDGES AND VIADUCTS



**UTE AVE VILABOA - HIGH SPEED RAILWAY VIADUCTS
PONTEVEDRA – SPAIN**

PRECAST CONCRETE BOX GIRDER BRIDGES

SPANS = 40/50 m

BRIDGES AND VIADUCTS



UTE SIERO - HIGHWAY JUNCTION
AS-1: MIERES-GIJON / A-64:VILLAVICIOSA-OVIEDO

LA CARRERA (SIERO) – ASTURIAS – SPAIN

STEEL BOX GIRDER BRIDGES

SPANS = 20/35 m

BRIDGES AND VIADUCTS



TAPUSA- ACCESS BRIDGE FROM CV-3307 TO THE RESIDENTIAL AREA OF "LA BARRACA" OVER THE "BARRANCO DEL VADO DE PUÇOL" – VALENCIA - SPAIN

CIVIL ENGINEERING PROJECTS



**BUSQUETS (BAU B) - REDEVELOPMENT OF THE SEA FRONT AND RAVINE BETWEEN VEGUETA-TRIANA
LAS PALMAS DE GRAN CANARIA - SPAIN**

CIVIL ENGINEERING PROJECTS



**AYUNTAMIENTO DE MALAGA
GUADALMEDINA RIVER CHANNELLING
MALAGA - SPAIN**



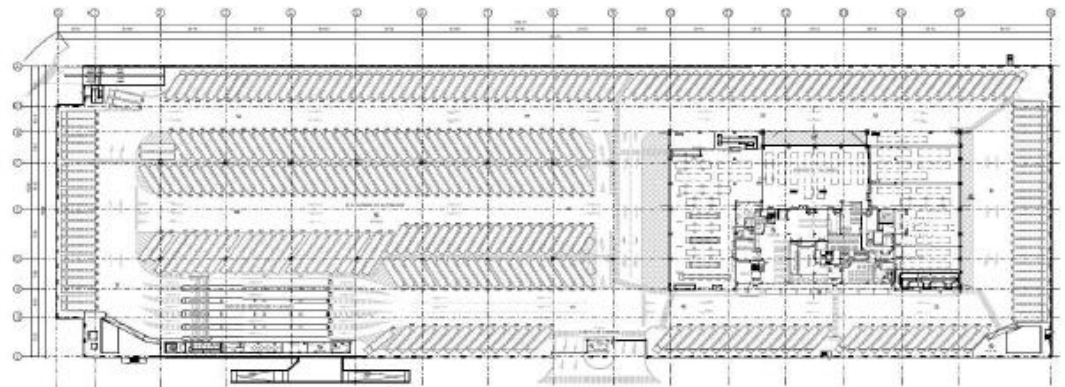
TAPUSA - EL MUSEL PORT WAREHOUSE - GIJON - SPAIN

EDIFICACIÓN SINGULAR



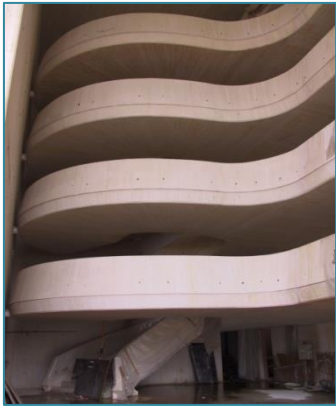
ESSENTIAL SERVICES BUILDING - CANARIAS (SPAIN)

REMARKABLE BUILDINGS



NEW MADRID MUNICIPALITY ELECTRIC BUS OPERATION CENTER "LA ELIPA" FOR 300 VEHICLES

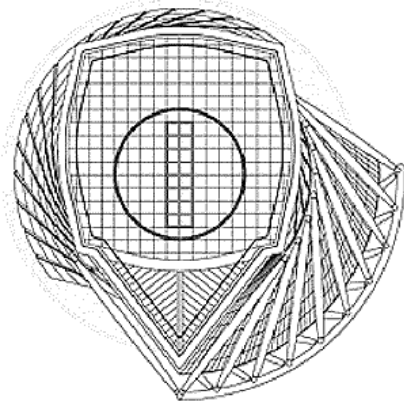
REMARKABLE BUILDINGS



CALATRAVA VALLS - PALACIO DE LAS ARTES REINA SOFIA (THE CITY OF ARTS AND SCIENCES)

VALENCIA – SPAIN

REMARKABLE BUILDINGS



CALATRAVA VALLS - TURNING TORSO – MALMÖE – SWEDEN

REMARKABLE BUILDINGS



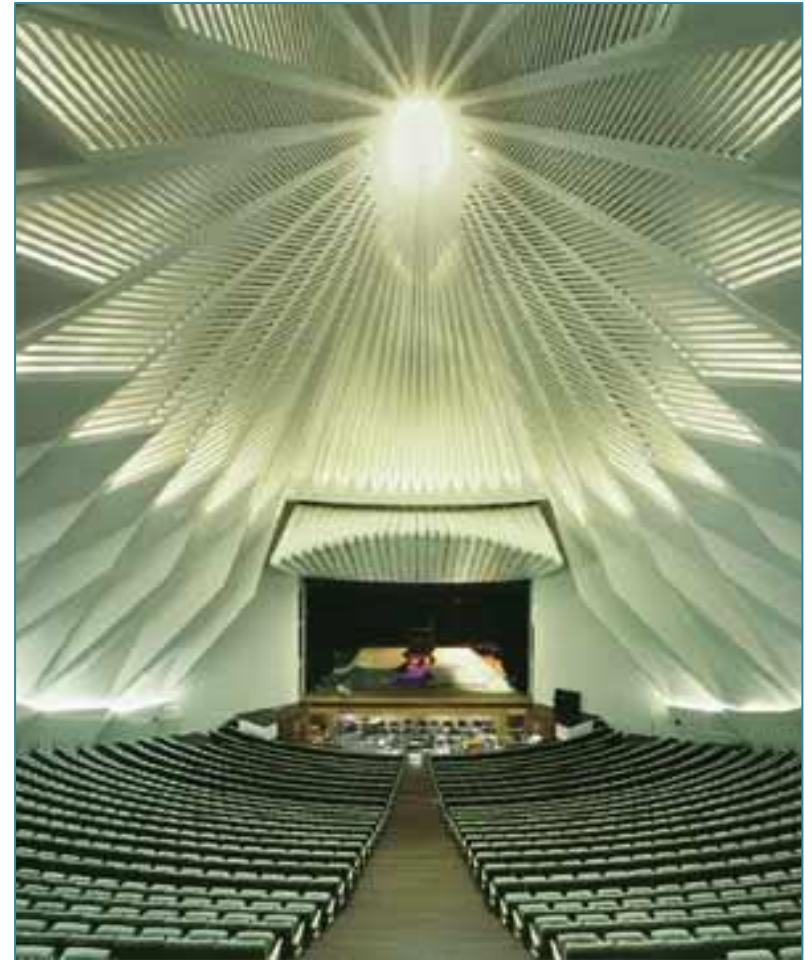
MENIS ARQUITECTOS - MAGMA ART & CONGRESS – TENERIFE SUR – SPAIN

REMARKABLE BUILDINGS



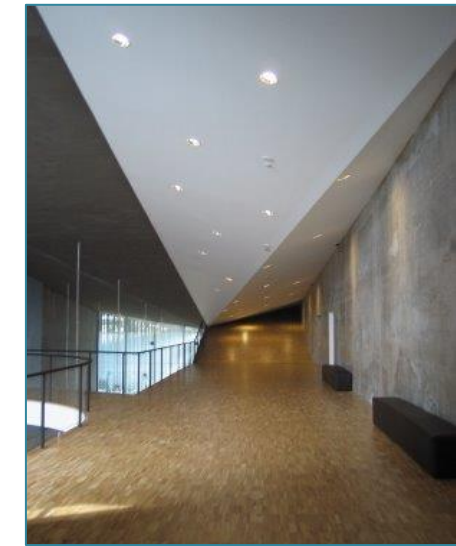
ARCHITECT: JULIO FRANCO
SPORTS HALL – SANTANDER – SPAIN

REMARKABLE BUILDINGS



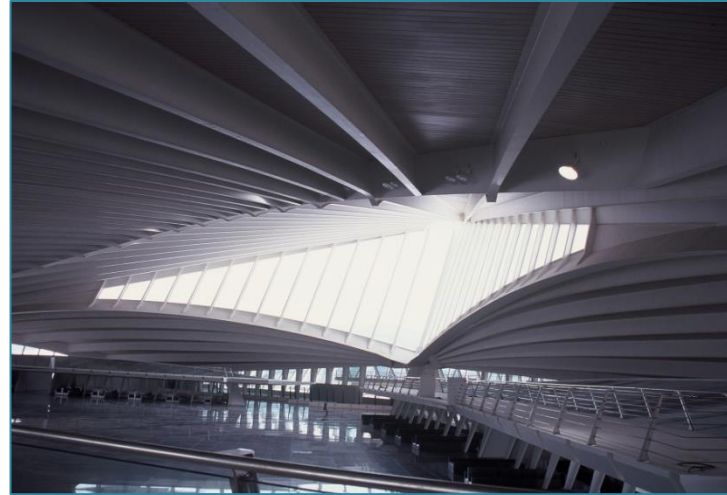
CALATRAVA VALLS - AUDITORIUM - TENERIFE - SPAIN

REMARKABLE BUILDINGS



HERZOG & MEURON - TENERIFE ESPACIO DE LAS ARTES (TEA) – TENERIFE – SPAIN

REMARKABLE BUILDINGS



CALATRAVA VALLS - SONDIKA AIRPORT TERMINAL – BILBAO – SPAIN

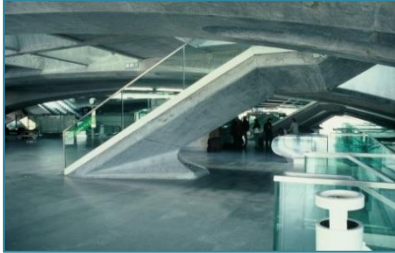
REMARKABLE BUILDINGS



ARCHITECT: FERNÁNDEZ LONGORIA

**RESTORATION OF THE "ALCÁZAR DE TOLEDO" AND ITS EXTENSION AS NEW HEADQUARTERS
OF THE "MUSEO DEL EJÉRCITO" – TOLEDO – SPAIN**

REMARKABLE BUILDINGS



CALATRAVA VALLS - RAILWAY STATION "GARE DO ORIENTE" – LISBON – PORTUGAL

CONTACT



MANAGING DIRECTOR

Maria Eugenia Alonso

maria.alonso@martinezsegovia.com

GENERAL DIRECTOR

José Antonio Franco Lopez

direcciontecnica@martinezsegovia.com

MARTINEZ SEGOVIA, FERNANDEZ, PALLAS Y ASOCIADOS SA

Gran Vía 69, Office 203

28013 Madrid (Spain)

Tel. +34 91 726 19 00

www.martinezsegovia.com
